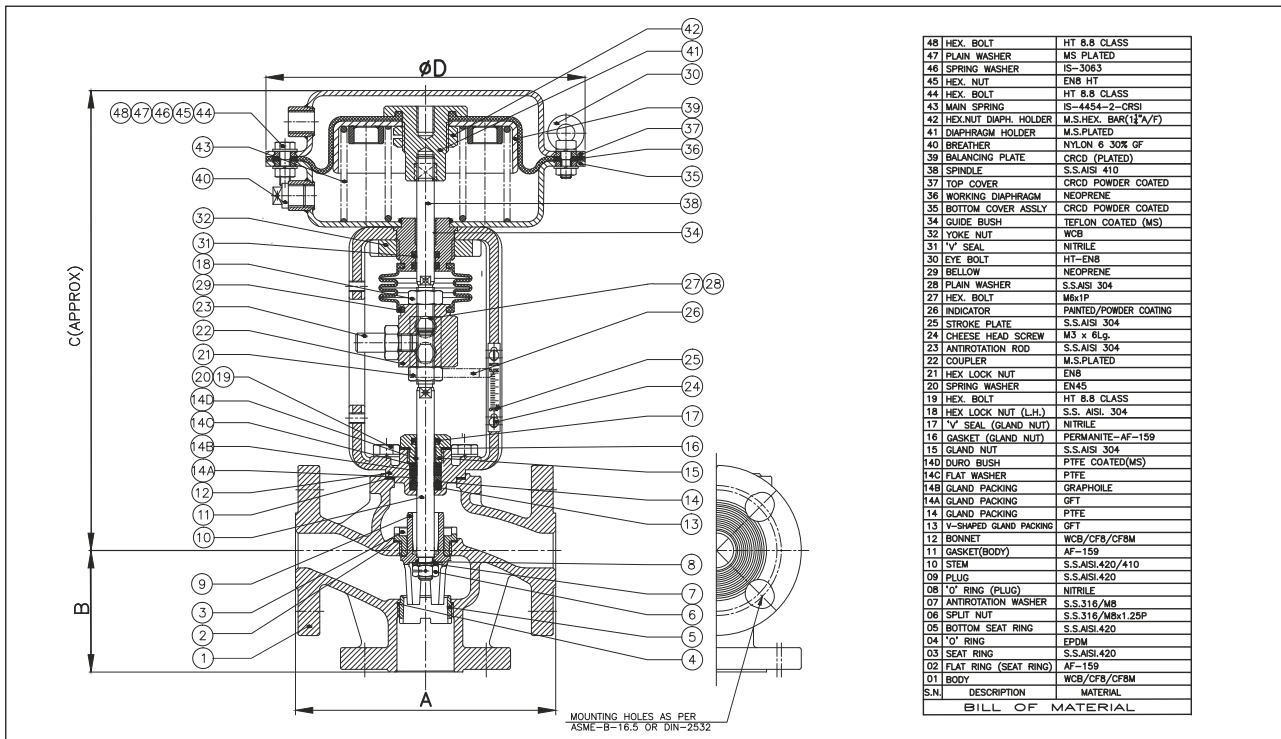
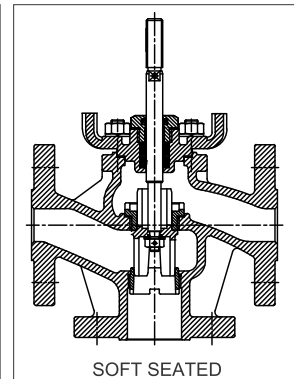
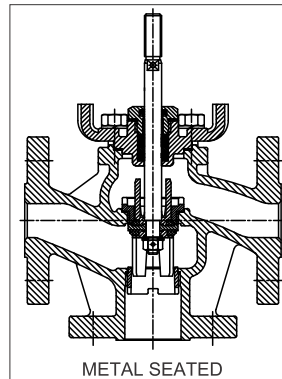


3-Way Pneumatic on-off & control Valves with Multispring Diaphragm Actuator.



TECHNICAL DATA

| Valve Size MM | 20 | 25 | 40 | 50 | 65 | 80 | 100 | 150 |
|-------------------------|--------------|-----|-----|-----|-----|-----|-----|-----|
| Port Size Dim in mm | Upper A Port | 21 | 27 | 40 | 50 | 65 | 80 | 140 |
| | Upper B Port | 25 | 27 | 40 | 50 | 60 | 75 | 140 |
| Kv. M ³ /hr. | 6.3 | 10 | 25 | 40 | 63 | 100 | 160 | 320 |
| Travel | 20 | 20 | 20 | 20 | 30 | 30 | 30 | 30 |
| Actuator MSD | 200 | 200 | 250 | 250 | 400 | 600 | 600 | 600 |



DIMENSIONS (IN MM)

| Model Number | Size Inch | Pneumatic Actuator | A | B | C | ØD | Wt. Kg. (Approx.) | Envelope Size LxHxW (Approx.) | Box Wt. Kg. (Approx.) |
|----------------|-----------|--------------------|-----|-----|-----|-----|-------------------|-------------------------------|-----------------------|
| | | | | | | | | | |
| 7916A 205X200 | 3/4 | 200 | 150 | 70 | 265 | 200 | 8.5 | 470 x 275 x 275 | 10.5* |
| 7916A 255X200 | 1 | 200 | 160 | 75 | 286 | 200 | 10 | 505 x 275 x 275 | 12.5* |
| 7916A 405X250 | 1 1/2 | 250 | 200 | 90 | 340 | 250 | 18 | 528 x 275 x 275 | 22.5* |
| 7916A 505X250 | 2 | 250 | 230 | 100 | 361 | 250 | 22 | 591 x 275 x 275 | 27.5* |
| 7916A 655X400 | 2 1/2 | 400 | 290 | 120 | 436 | 300 | 27 | 615 x 300 x 350 | 33.5** |
| 7916A 805X600 | 3 | 600 | 310 | 130 | 442 | 366 | 32 | 615 x 425 x 425 | 40** |
| 7916A 1005X600 | 4 | 600 | 350 | 150 | 460 | 366 | 37 | 650 x 425 x 425 | 46** |
| 7916A 1505X600 | 6 | 600 | 480 | 225 | 675 | 366 | 42 | 900 x 425 x 425 | 52.5** |

NOTE:

Technical specification, details & dimensions are approximate & subject to change without prior notice .

*Weight of cardboard + PUF Box Packing, Which may change for Export when packed in wooden box. **Weight of Wooden Box packing.