

'AVCON' 2-Way Tight Shut Off, Hand Operated Butterfly Valves.

(Wafer Type, Centric Design, with Elastomer Liner)

DATA SHEET
BFV - 4222B

SPECIFICATIONS Design as per API 609.

Valve Sizes	: 40mm (1 ½") to 300mm (12").
Face to Face	: As per API 609-A.
Testing & Inspection	: In accordance to EN-1226 API 598
Pressure Temp. Rating:	: As per ASTM A 16.34.
Pressure Rating	: Body-ANSI, Class 150, holding between flanges.
Bodies	: CI-ASTM 126-04 Class B, SGI-ASTM-A-536-65-45-12, CS- ASTM A216 WCB(DIN1.0619) (GS-C 25),SS-ASTM A351CF8M (DIN 1.4408)(GX6 Cr.Ni MO 1810). SS-ASTM A351CF8 (DIN 1.4301).
Shaft	: ASTM A511 Gr.TP- 410/420.
Disc	: SGI-ASTM-A-536-65-45-12, CS- ASTM A216 WCB(DIN1.0619) (GS-C 25), SS- ASTM A351CF8M or CF8.
Liner & Temperature	: EPDM-ISO 1691, (-)20°C to 120°C BN-ISO 1691(-)5°C to 80°C.
Shaft Packing	: PTFE.
End Connection	: Suitable for holding between the flanges of ANSI Cl.150, ISO 7005-1, BS 5811, DIN 2533 PN16.
Leakage	: Tight shut-off, Class V on Water Class VI on Air

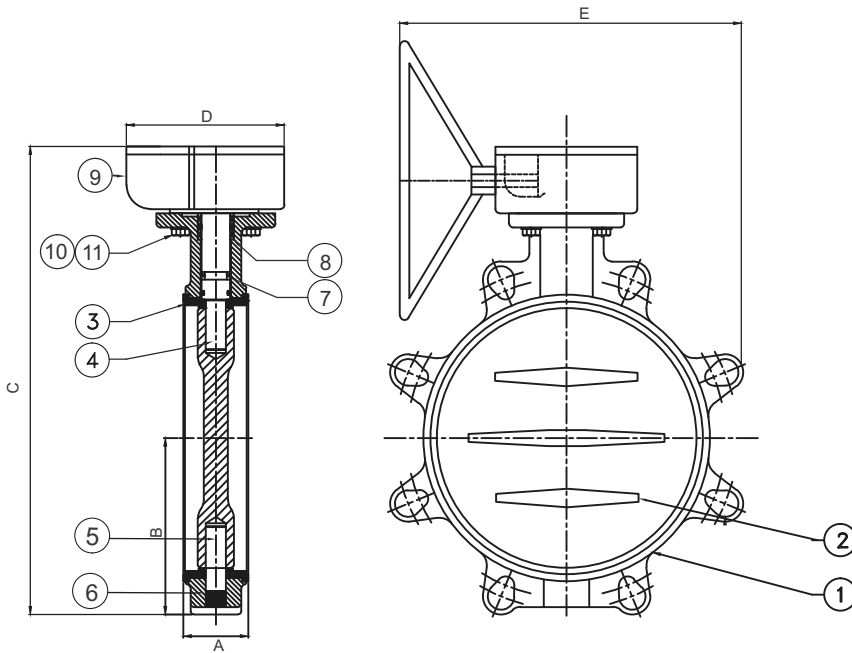


Sales Point	: Centric Butterfly Valves with elastomer liner. For On/Off Application
Application	: Water Type Butterfly Valve are suitable for industrial application, General Services and water treatment.

SPECIFICATION TABLE

Valve Size		Model No	BFV Torque	Flow Factor Kv	Construction Ref.No	Material		Weight (Approx.)
mm	Inch		Nm	M ³ /hr.		Body	Seat	Kgs.
DN40	1½	4222B40	10	49	571	CI/CS/SGI	EPDM/BN	3.0
DN50	2	4222B50	20	91	571	CI/CS/SGI	EPDM/BN	3.7
DN65	2½	4222B65	30	206	571	CI/CS/SGI	EPDM/BN	6.3
DN80	3	4222B80	40	436	571	CI/CS/SGI	EPDM/BN	6.5
DN100	4	4222B100	60	660	571	CI/CS/SGI	EPDM/BN	20.0
DN125	5	4222B125	80	1300	571	CI/CS/SGI	EPDM/BN	20.0
DN150	6	4222B150	130	2100	571	CI/CS/SGI	EPDM/BN	20.0
DN200	8	4222B200	170	4190	572	CI/CS/SGI	EPDM/BN	34.5
DN250	10	4222B250	220	6090	572	CI/CS/SGI	EPDM/BN	40.0
DN300	12	4222B300	380	9570	572	CI/CS/SGI	EPDM/BN	72.0

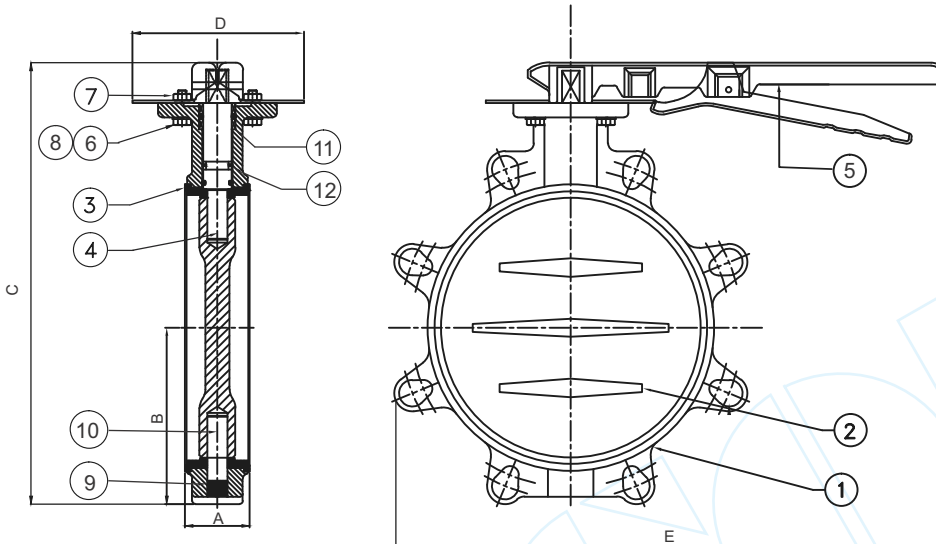
CONSTRUCTION REF. NO : 572



11	SPRING WASHER	En8	4
10	HEX BOLT	GR-8.8	4
9	GEAR BOX	CI/CS/SGI	1
8	GLAND PACKING(SET)	PTFE	1
7	ORING	EPDM	1
6	PLUG	STEEL PLATED	1
5	STUB SHAFT	S.S-410	1
4	DRIVE SHAFT	S.S-410	1
3	SEAL RING	EPDM/BN	1
2	FLAPER	CI/CS/SGI	1
1	BVF(BODY)	CI/CS/SGI	1
NO	DESCRIPTION	MATERIAL	QTY

BILL OF MATERIAL

CONSTRUCTION REF. NO : 571



12	ORING	EPDM	1
11	GLAND PACKING(SET)	PTFE	1
10	STUB SHAFT	S.S410	1
9	PLUG	STEEL PLATED	1
8	SPRING WASHER	En8	1
7	NUT	GR-8	4
6	HEX BOLT	GR-8.8	4
5	LEVER ASSY	SHEET METAL	1
4	DRIVE SHAFT	S.S.410	1
3	SEAL RING	EPDM/BN	1
2	FLAPER	CI/CS/SGI	1
1	BVF(BODY)	CI/CS/SGI	1
NO	DESCRIPTION	MATERIAL	QTY

BILL OF MATERIAL

DIMENSIONS IN (MM)

Catalogue Number	Size		A	B	C	D	E
	inch	mm					
4222B40	1 1/2	40	33	65.5	210	100	173
4222B50	2	50	43	80	220	100	173
4222B65	2 1/2	65	46	87.5	235	100	173
4222B80	3	80	46	95	260	130	260
4222B100	4	100	52	115	280	130	260
4222B125	5	125	56	120	355	150	290
4222B150	6	150	56	144	370	150	290
4222B200	8	200	60	204.5	500	198	421
4222B250	10	250	68	212	515	198	421
4222B300	12	300	78	248	545	198	421