

4/2 Way Pilot Operated Poppet Type Solenoid Valves.

DATA SHEET
9440B

2 POSITION SINGLE SOLENOID VALVES,
4 WAY / 4 PORT (COMMON EXHAUST) / 2 POSITION VALVES.

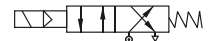
SPECIFICATIONS

Sizes	: 6mm (1/4") to 25mm (1").
End Connections	: Standard-NPT, Optional - BSP.
Construction	: Investment Casted CF8 / CF8M.
Body & Piston	
- Seat	: Standard - Viton.
Differential Pressure	: From 0.7 to 9 bar (9440B). From 2 to 19 bar (9440B).
Temperature of Fluid	: 5° to 80°C.
Coil Voltage	: Standard-230-volts, 50Hz. AC. Optional - 24,110, 240 V DC & AC 50Hz or 60Hz. Standard coil SQ-GP/H With DIN ISO 4400- With 3 Pin Connection PG-11 for Cable entry.
Coil Insulation and Temperature.	: Ambient upto 75°C. Class 'H' insulated upto155°C, intermittent 180°C.
Coil Rating	: Continuously rated.
Enclosure	: Standard-General purpose IP-20, Optional-Weatherproof IP-67, Flameproof Round coil upto FLP-IIC.
Fluids	: Air, gas, water, light oil.
Standard Features	: Manual override.
Sales Point	: Heavy duty, high flow , reliable, semi-poppet valve for multimillion operations. Rugged construction, design Investment Casted CF8/CF8M with Viton Seat.



Application	: For operation Double Acting cylinders, forging and moulding processes, machine tools, power generation, Ash handling plant, LPG bottling equipment and others.
NOTE	: USE OF FILTER IN THE INLET SIDE IS HIGHLY RECOMMENDED, AVAILABLE WITH SPECIAL WP & FLP COILS.

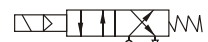
SPECIFICATION TABLE 4/2 POSITION SINGLE SOLENOID



Catalogue Number	Pipe Size	Orifice Size	Flow Factor Kv	Minimum Pressure	Maximum Operating Pressure (bar)						BTP	Material		Constr. Ref.	VA Rating	Watt Rattling	Coil	Housing
	Inch	mm	M³/hr.		bar	AC			DC						AC	AC	Type	
						Air/Gas	Water	Light Oil	Air/Gas	Water		Light Oil	bar		Body	Seat		
9440B06	1/4	6.3	0.7	0.7	9	8	6	9	8	6	40	CF8	Viton	30.1	18	12	M45.1	SQ
9440B10	3/8	12.7	1.9	0.7	9	8	6	9	8	6	40	CF8	Viton	30.1	18	12	M45.1	SQ
9440B15	1/2	12.7	1.9	0.7	9	8	6	9	8	6	40	CF8	Viton	30.1	18	12	M45.1	SQ
9440B20	3/4	19	4.8	0.7	9	8	6	9	8	6	40	CF8	Viton	30.1	18	12	M45.1	SQ
9440B25	1	19	4.8	0.7	9	8	6	9	8	6	40	CF8	Viton	30.1	18	12	M45.1	SQ

◆ Above pressure range can be improved higher wattage coil.

4/2 POSITION SINGLE SOLENOID



9440B07	1/4	6.3	0.7	2	19	15	9	19	15	9	40	CF8	Viton	31.2	36	22	M50	SQ
9440B11	3/8	12.7	1.9	2	19	15	9	19	15	9	40	CF8	Viton	31.2	36	22	M50	SQ
9440B16	1/2	12.7	1.9	2	19	15	9	19	15	9	40	CF8	Viton	31.2	36	22	M50	SQ
9440B21	3/4	19	4.8	2	19	15	9	19	15	9	40	CF8	Viton	31.2	36	22	M50	SQ
9440B26	1	19	4.8	2	19	15	9	19	15	9	40	CF8	Viton	31.2	36	22	M50	SQ