

2/2-Way Pilot Operated, Piston Type High Pressure Solenoid Valves.

DATA SHEET
9100H
9120H

Normally Closed, Energised To Open,
Normally Open, Energised To Close.

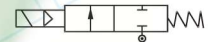
SPECIFICATIONS

Sizes	: 10mm (3/8") to 75mm (3").
End Connections	: Standard-G-ISO-228 (BSP-F), Optional - NPT.
Construction-Body	: Upto 20mm (3/4") Brass forged IS 6912 and above in SS ASTM A351 Gr.CF8. Optional-SS ASTM A351Gr. CF8M.
-Piston	: SS AISI 304 (Bar Stock).
-Seat	: Standard -PTFE, : Optional-Viton.
Differential Pressure	: 2 to 24 bar.
Temperature of Fluid	: -5°C to 120°C.
Coil Voltage	: Standard-230-volts, 50Hz. A.C. Optional-24, 110, V DC & AC 50 Hz or 60Hz.
Coil Insulation and Temperature.	: Ambient upto 42°C. Class 'H' insulated upto155°C.
Coil Rating	: Continuously rated.
Enclosure	: Standard-General purpose SQ. moulded coil upto IP-20, Optional-Weatherproof SQ. moulded coil upto IP-67, Flameproof coil upto FLP IIC.
Fluids	: Air, water, light hydraulic oil, mild corrosive medium, etc.



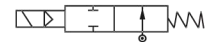
Optional Features	: Manual override, mounting bracket.
Sales Point	: Highly reliable, compact, maintenance free valve, suitable for thousands of operations.
Application	: Chemical, textile, petrochemical, water treatment, ash handling system, combustion equipment, etc. Not suitable for Steam duty application.
Note	: USE OF FILTER IN THE INLET SIDE IS HIGHLY RECOMMENDED.

SPECIFICATION TABLE 2/2 WAY NORMALLY CLOSED



Catalogue Number	Pipe Size	Orifice Size	Flow Factor Kv	Minimum Pressure	Maximum Operating Pressure (bar)						BTP	Material	Constr. Ref.	VA Rating	Watt Rating	Coil	Housing
					AC			DC									
					Air/Gas	Water	Light Oil	Air/Gas	Water	Light Oil							
9100H104	3/8	16	2.6	2	20	16	7	24	24	20	40	BR PTFE	9.1	18	12	M45.1	SQ
9100H154	1/2	16	3.4	2	20	16	7	24	24	20	40	BR PTFE	9.1	18	12	M45.1	SQ
9100H204	3/4	20	5.2	2	20	16	7	24	24	20	40	BR PTFE	9.1	18	12	M45.1	SQ
9100H254	1	25	8.6	2	18	16	7	24	24	20	40	CF8 PTFE	9.1	18	12	M45.1	SQ
9100H304	1 1/4	28	14.0	2	18	16	7	24	24	20	40	CF8 PTFE	9.1	18	12	M45.1	SQ
9100H354	1 1/2	34	17.3	2	18	16	7	24	20	10	40	CF8 PTFE	9.1	18	12	M45.1	SQ
9100H504	2	45	30.5	2	18	14	7	22	16	10	40	CF8 PTFE	154	18	12	M45.1	SQ
9100H654	2 1/2	60	45	2	14	10	7	14	14	10	40	CF8 PTFE	154	36	22	M50	SQ
9100H754	3	72	66	2	14	9	6	14	12	8	40	CF8 PTFE	154	36	22	M50	SQ

2/2 WAY NORMALLY OPEN (NEW MAGNETIC CONSTRUCTION TYPE)



9120H104	3/8	16	2.6	2	12	12	7	12	12	7	40	BR PTFE	9.1	18	12	M45.1	SQ
9120H154	1/2	16	3.4	2	12	12	7	12	12	7	40	BR PTFE	9.1	18	12	M45.1	SQ
9120H204	3/4	20	5.2	2	12	12	7	12	12	7	40	BR PTFE	9.1	18	12	M45.1	SQ
9120H254	1	25	8.6	2	10	10	7	10	8	7	40	CF8 PTFE	9.1	18	12	M45.1	SQ
9120H304	1 1/4	28	14.0	2	10	10	7	10	10	7	40	CF8 PTFE	9.1	18	12	M45.1	SQ
9120H354	1 1/2	34	17.3	2	10	10	7	10	10	7	40	CF8 PTFE	9.1	18	12	M45.1	SQ
9120H504	2	45	30.5	2	10	10	7	10	10	7	40	CF8 PTFE	154	18	12	M45.1	SQ
9120H654	2 1/2	60	45	2	6	7	5	6	7	5	40	CF8 PTFE	154	36	22	M50	SQ
9120H754	3	72	66	2	5	6	5	5	6	5	40	CF8 PTFE	154	36	22	M50	SQ