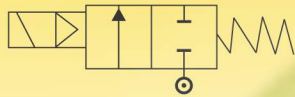




SOLENOID VALVES FOR IRRIGATION / SPRINKLER SYSTEM

2/2 WAY – NORMALLY CLOSED – INTERNAL PILOT OPERATED WITH MANUAL OVERRIDE

SERIES 641A



N.C.
Normally Closed
 Coil energised - Open
 Coil de-energised - Closed

General Description:

Series 641A Solenoid Valves are Diaphragm Pilot Operated and require very low minimum differential pressure to operate. The valves are used for application requiring High Flow Rate. Valves are suitable for general application with media as Water, at room temperature. Water must be filtered without suspended or dissolved impurities.

End Connection:

Standard: 'G'-ISO-228 (BSP-F), Optional: RP (150 7/1) BSP-T.

Temperature Range:

Working temperature for media is (-)5°C to +80°C with Hytrel diaphragm.

Max. Temperature Range Of Fluid:

Minimum (-)5°C and maximum 65Deg.C.

Manual Override:

Valve can be operated manually to open the valve when there is No Electrical supply to the coil. Manual Override consist of slotted head screw for Screw Driver with Two possible position to Open the valve and Close the valve. Manual Override is position at Close Position when valve is operated through coil.

BEFORE ATTEMPTING ELECTRICAL OPERATION: CHECK THE MANUAL OVERRIDE IS AT CLOSE POSITION.

Mounting Bracket:

Valves are self mountable, but can be provided with Mounting Bracket (MB) as optional.

Coils:

Series 641A Solenoid Valves are supplied with Class 'H' insulated (180°C) encapsulated in Thermo Plastic containing 40% Glass fibre. All coils are for continuous service 100% duty (E.D). Rated voltage tolerances for all AC coils +10%/-5% and for DC supply coils: +10%/-5%.

Installation:

Valves can be mounted in any position except "Inverted", preferably in horizontal pipeline with magnetic construction in vertical and upright position. Series 641A Solenoid valves are not designed for Back Pressure coming from downstream side.

Approvals:

IP-67 As per IS-12063-1987 (IEC-60529-2001), Coil M22-SQ: 220/230V 50/60 Hz, 240 50/60Hz, 110 50/60 Hz, 24V DC.

Materials:

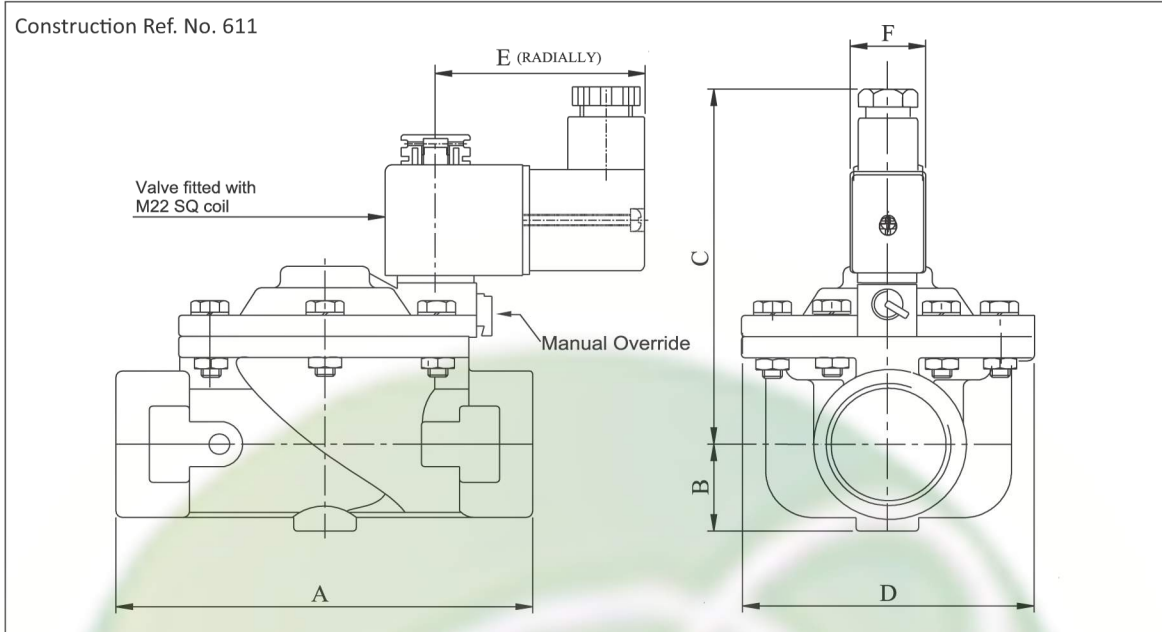
- Valve Body : Glass filled Nylon PA6,
- Seals(Seating) : Hytrel.
- Tube Nut : Brass extruded tube.
- Plunger & Stopper : AISI 430F St.St.
- Spring : AISI 302 St.St.
- Shading Ring : For AC copper,
For DC: No shading ring.
- Coil Type : AC – M22-SQ/WP67/H, 240, 110 V 50 Hz, Rating:9.4 VA, DC – M22-SQ/WP67/H, 12V, 24 VDC, Rating: 6 Watts.
- Optional features : 1. Flow control arrangement.
2. Pulse to Open, Pulse to Close type coil.
3. Timer for periodic operating of the valve.
- Sales Points : Most reliable, maintenance free on-off valve for low cost automation.
- CAUTION : NOT TO BE USED ON OIL, STEAM, FUEL GAS, HOT-WATER, WATER BELOW -15Deg.C, Vibrating Machinery.
- NOTE : Normally open design not available.

SPECIFICATIONS:

Series	Size 'G'thr	Orifice Size	Flow Factor Kv	Body Material	Seat	BTP	Working Pr.(bar)		Coil Type	Coil Rating		Constr. Ref. No	Weight kgs
							230V AC	24V DC		VA	Watt		
641A	Inch	mm	M ³ /hr.			bar	min	max		~	=		
15	½	15	4	PA 6	HYT	10	0	6	M 22-SQ	9.4	2.6	611	0.275
20	¾	20	5.2	PA 6	HYT	10	0	6	M 22-SQ	9.4	2.6	611	0.275
25	1	25	8.6	PA 6	HYT	10	0	6	M 22-SQ	9.4	2.6	611	0.296
35	1½	35	17.3	PA 6	HYT	10	0	6	M 22-SQ	9.4	2.6	611	0.773
50	2	50	30.5	PA 6	HYT	10	0	6	M 22-SQ	9.4	2.6	611	0.844



NOTE: Valves suitable for AC and DC supply are different in characteristics and construction. No Interchanging of coils between DC to AC or AC to DC possible. DO NOT INTERCHANGE COILS. Minimum details required for submitting offer: Size , Body material, seating, medium name, Flow (M3/hr), pressure (bar), temp. Deg.C, coil voltage AC or DC.,Quantity (Nos), etc.



DIMENSION TABLE

CATALOGUE NO.	Size (Inch)	DIMENSION IN MM.						APPROX WT. (kgs)
		A	B	C	D	E	F	
641A - 15	½	110	20	88	81	50	22	0.275
641A - 20	¾	110	20	88	81	50	22	0.275
641A - 25	1	110	22	88	81	50	22	0.296
641A - 35	1½	162	30	110	126	50	22	0.773
641A - 50	2	172	37	110	126	50	22	0.844

How to read the catalogue:



Coil Voltage:

