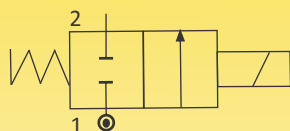




# SOLENOID VALVES FOR AUTOMATION

2/2 WAY – NORMALLY CLOSED – DIRECT ACTING TYPE, WITHOUT MANUAL OVERRIDE

## SERIES 620A



**N.C.**  
**Normally Closed**  
 Coil energised - Open  
 Coil de-energised - Closed

### General Description:

Series 620A Solenoid Valves are Direct Acting and DO NOT require minimum pressure to operate. Valves are used on general applications where small overall dimensions and low power consumption is required. Valves are applicable on media such as Air, Inert Gas, etc. provided they are compatible with construction material of the valve.

### End Connection:

'G'-ISO-228 (BSP) & NPT.

### Max Temperature Range:

For media – Minimum (-)5°C and maximum with Buna Nitrile seating is 80°C; Viton seating 140°C. Max. ambient temperature with Class 'H' coil (+)42°C.

### Mounting Bracket:

Mounting Brackets are available as accessory.

### Coil:

Series 620A Solenoid Valves are supplied with Class 'H' insulated (180°C) coils; encapsulated in Thermo Plastic, containing 40% Glass fibre. All coils are for continuous service, 100% duty (E.D). Rated voltage tolerance +10%/-5% for DC supply. The coils are provided with Electronic Circuit, when switched on-surge of current will follow to open the valve. Then within fraction of second, current drops to not more than 100mA, which is operating current. This lower current model will offer, low current and economy of power consumption, at the same time, higher port size can be used. Coils are available only for 24V DC supply  $\pm$ 5% with IP 65 as per IEC-60529-2001. DIN connector is provided of WP65 coil with PG 11 dimension Plastic Gland and is provided

with 3-Pin DIN Connector with LED to show power 'ON'.

Solenoid Valve will have time delay of less than 100 milli seconds from energization to full open and vice versa.

### Installation:

Valves can be mounted in any position except "Inverted", preferably in horizontal pipeline with magnetic construction in vertical and upright position.

Series 620A Solenoid valves are not designed for Back Pressure coming from downstream side.

### Approvals:

IP-65 As per IEC-60529-2001, Special coil for 24V DC.

### Material:

Valve Body	: ASTM A351 Gr.CF8M (St. St. 316).
Seals(Seating)	: Viton.
Tube Nut	: Stainless Steel : AISI 316St.St.
Plunger & Stopper	: AISI 430FR St.St.
Spring	: AISI302 St.St.,
Shading Ring	: For DC: No shading ring.
Coil Type	: DC-SQ/GP/H,24V Rating: Watts 2.6
Application	: Machines, Electro Medical Equipment, Machines, Exhaust Gas Analyzers, Scientific Equipment, Automatic Dispensers.

### NOTE

- 1) Manual override not available.
- 2) Not available in Normally open design.

## SPECIFICATIONS:

Series	Size 'G' thr	Orifice Size	Flow Factor Kv	Body Material	Seat	BTP	Working Pr.(bar)		Coil Type	Coil Rating		Constr. Ref. No	Weight* kgs
							230V AC	24V DC		VA	Watt		
620A	Inch	mm	M <sup>3</sup> /hr.	CF8M	V	20	min	max	Spl	-	=	580	0.200
12	½	5	0.5	CF8M	V	20	0	10	Spl	-	=	580	0.200

\*Weight of CF8M Body.

