

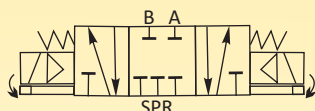
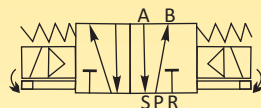
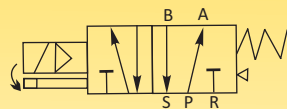


SOLENOID VALVES FOR AUTOMATION



**4-WAY, 5-PORT, 2-POSITION, SINGLE AND DOUBLE SOLENOIDS, ALSO 3-POSITION
ALL PORTS BLOCKED TYPE, PILOT OPERATED SPOOL TYPE VALVES.**

SERIES 461D - 462D - 463D



NOTE: For your requirement of valves with Flameproof Enclosure, please refer to catalogue no. 9461D & 9462D.

General Description:

Series 461D-462D-463D Solenoid Valves are Pilot Piston Operated type Valves, requires very low minimum pressure differential to operate. Valves are used on application where high flow rate is required. Valves are suitable for general application with media such as Air, Gas, etc., provided they are compatible with construction material of the valve.

End Connection:

'G'-ISO-228 (BSP) .

Max Temperature Range:

For media – Minimum (-)5°C and maximum with Buna Nitrile seals is 80°C.
Max. ambient temperature with Class 'H' coil (+)42°C.

Manual Override:

Valve can be operated manually, when there is No Electric supply to the coil. Manual Override consist of press & twist type mechanism with Two possible position to Open the valve and Close the valve. Manual Override is to be positioned at Close Position when valve is operated through coil.

BEFORE ATTEMPTING ELECTRICAL OPERATION: CHECK THE MANUAL OVERRIDE IS AT CLOSE POSITION.

Mounting Bracket:

Mounting Brackets are available as accessory.

Coil:

Series 461D-462D-463D Solenoid Valves are supplied with Class 'H' insulated (180°C) coil; encapsulated in Thermo Plastic, containing 40% Glass fibre.

All coils are for continuous service, 100% duty (E.D). Rated voltage tolerances for all AC Coils $\pm 10\%$ and for DC Supply Coils $\pm 10\%/-5\%$. Coils can be used on AC with frequency of 50 Hz to IP 65 as per IEC-60529-2001.

Installation:

Valves can be mounted in any position except "Inverted", preferably in horizontal pipeline with magnetic construction in vertical and upright position. Series 461D-462D-463D Solenoid valves are not designed for Back Pressure coming from downstream side.

Approvals:

IP-65 As per IEC-60529-2001, Coil M22-SQ: 220/230V 50/60 Hz, 240C 50/60Hz, 110V 50/60 Hz, 24V DC.

Material:

Valve Body for 1/4", : Aluminium HE-30 Bar
3/8" & 1/2" size : stock & Hard Anodized.
Seals/Poppets : Buna Nitrile.
Tube Nut : Brass tube nuts,
Plunger & Stopper : AISI 430FR St.St.
Spring : AISI302 St.St.
Shading Ring : For AC: Copper.
For DC: No shading ring.
Coil Type : AC – M22-SQ/GP/H,
240, 110 V 50 Hz,
Rating:5.5 VA
DC-M22-SQ/GP/H, 24V
Rating : 4 Watts.
Application : For Operating Diaphragm
Control Valves, Pneumatic
Cylinders, Piston Type
Valves, etc.

SPECIFICATIONS: SINGLE SOLENOID

Series	Pipe Size	Orifice Size	Flow Factor Kv	Body Material	Seal	BTP	Working Pr.(bar)		Coil Type	Coil Rating		Constr. Ref.	Weight
							bar	min max		VA	Watt		
461D 06	1/4	06	0.6	AL	BN	16	2	10	M22-SQ	5.5	4	609	0.47
461D 10	3/8	10	1.0	AL	BN	16	2	10	M22-SQ	5.5	4	609	0.57
461D 15	1/2	15	1.5	AL	BN	16	2	10	M22-SQ	5.5	4	609	0.67

SPECIFICATIONS: DOUBLE SOLENOID

Series	Pipe Size	Orifice Size	Flow Factor Kv	Body Material	Seal	BTP	Working Pr.(bar)		Coil Type	Coil Rating		Constr. Ref.	Weight
							bar	min max		VA	Watt		
462D 06	1/4	06	0.6	AL	BN	16	2	10	M22-SQ	5.5	4	610	0.47
462D 10	3/8	10	1.0	AL	BN	16	2	10	M22-SQ	5.5	4	610	0.67
462D 15	1/2	15	1.5	AL	BN	16	2	10	M22-SQ	5.5	4	610	0.67

SPECIFICATIONS: DOUBLE SOLENOID 3 POSITION ALL PORTS BLOCKED VALVE

Series	Pipe Size	Orifice Size	Flow Factor Kv	Body Material	Seal	BTP	Working Pr.(bar)		Coil Type	Coil Rating		Constr. Ref.	Weight
							bar	min max		VA	Watt		
463D 15	1/2	15	1.5	AL	BN	16	2	10	M22-SQ	5.5	4	610	0.6

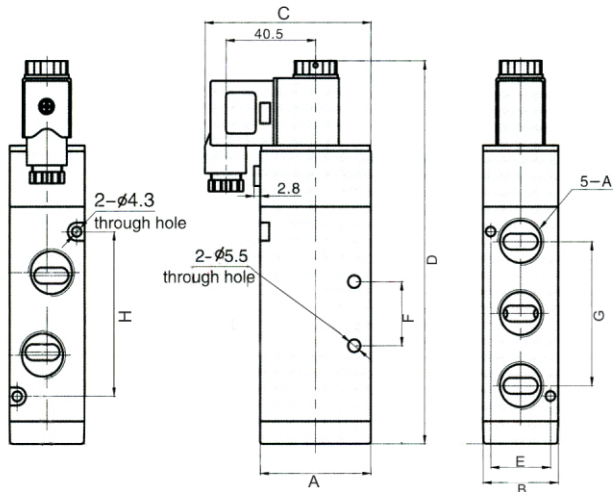
NOTE: Valves suitable for AC and DC supply are different in characteristics and construction.

No Interchanging of coils between DC to AC or AC to DC possible. DO NOT INTERCHANGE COILS.

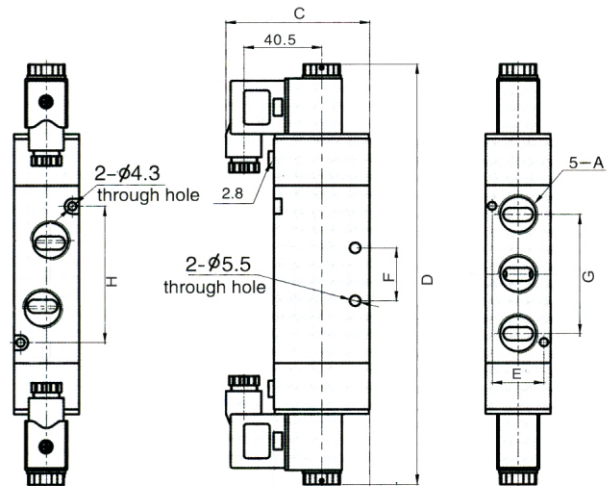
Minimum details required for submitting offer: Size, Body material, Seat Poppets, medium name, Flow (M3/hr), pressure (bar), temp. Deg.C, coil voltage AC or DC.,Quantity (Nos), etc.



Construction Ref. No. 609



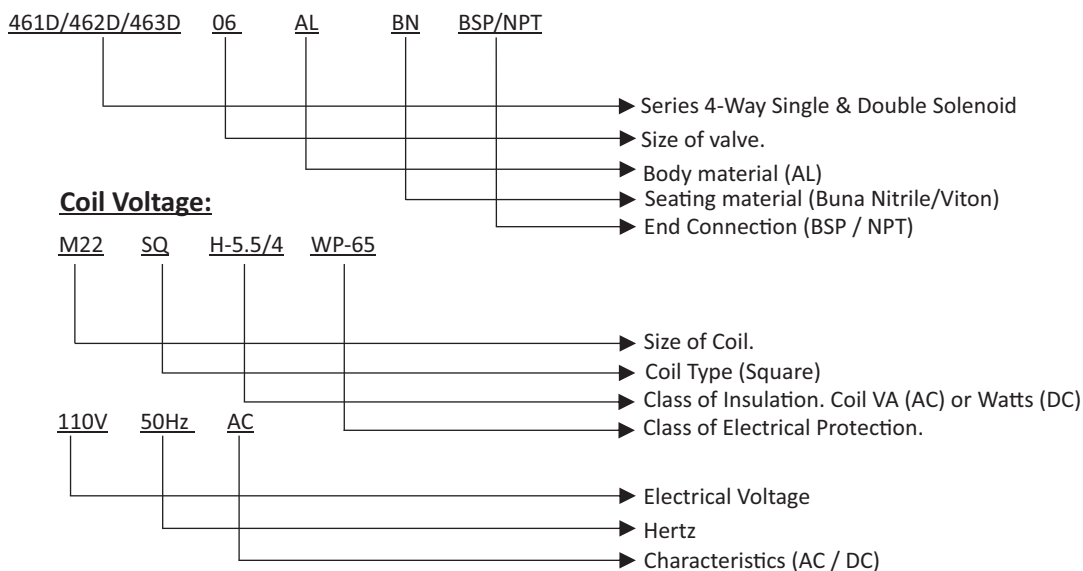
Construction Ref. No.610



DIMENSION TABLE

CATALOGUE NO.	Size	Dimensions in mm.								Construction Ref. No.
		A	B	C	D	E	F	G	H	
461D 06	1/4"	40	27	70	135.5	20	24	45	50	609
461D 10	3/8"	50	34	75	168	27	28	63	72	609
461D 15	1/2"	50	34	75	168	27	28	63	72	609
462D 06	1/4"	40	27	70	210	20	24	45	50	610
462D 10	3/8"	50	34	75	244	27	28	63	72	610
462D 15	1/2"	50	34	75	244	27	28	63	72	610
463D 15	1/2"	50	34	75	244	27	28	63	72	610

How to read the catalogue:



Office At.:
PUNE
NEW DELHI
KOLKATA
CHENNAI
BANGALORE
HYDERABAD
BARODA

Contact No.:
+91 (20) 2712 0776
+91 (11) 2646 0811
+91 (33) 2230 2471
+91 (44) 40282503
+91 (80) 42911261
+91 (40) 30916849
+91 (26) 52345078