

3/2-Way Engineering Plastic Benjo Type, Solenoid Valves.

Normally Closed, Energised To Open.

DATA SHEET
3353K

SPECIFICATIONS

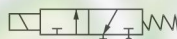
Sizes	: 6 mm (1/4").
End Connections	: Standard-G-ISO-228 (BSP-F).
Construction-Body	: Plastic Moulded (PA6).
Benjo Bolt	: Steel Plated.
Differential Pressure	: From 0 to 6 bar.
Coil Voltage	: Standard-230-volts, 50Hz. A C. Optional - 24, 110, 240 V DC & AC 50Hz or 60Hz.
Coil Insulation and Temperature.	: Ambient upto 42°C. Class 'H' insulated upto 155°C.
Coil Rating	: Continuously rated.
Enclosure	: Standard-General purpose SQ. moulded coil upto IP-20, Optional-Weatherproof SQ. moulded coil upto IP-67.
Fluids	: Air.
Sales Point	: Compact and reliable, Slow Opening & Slow Closing Valve with Manual Override as a Standard.
Connector	: DIN ISO 6952 used with gasket.



Application : Used as a pilot valve for many single acting pneumatic control valve.

Note : USE OF FILTER IN THE INLET SIDE IS HIGHLY RECOMMENDED.

SPECIFICATION TABLE



Catalogue Number	Pipe Size		Flow Factor Kv	Minimum Pressure	Maximum Operating Pressure (bar)		BTP	Material		Constr. Ref.	VA Rating		Watt Rating	Coil Type	Housing
	Inch	mm			Air /Gas	Air /Gas		Body	Bolt		AC	DC			
	M ³ /hr.	bar			bar	bar		bar	bar		AC	DC			
3353K015	1/4	1.5	0.07	0	6	6	10	PA6	STEEL	525	9.4	6	M22 H	SQ	

DIMENSIONS IN (MM)

CONSTRUCTION NO. : 525

ELECTRICAL REFERENCE

Coil Type	Power Consumption & Watt Rating			Class of Insulation	Protection
	AC		DC		
	VA Inrush	VA Holding	Watts		
M22H SQ	12.7	9.4	6	H	GP/WP IP-67

Note:

Technical specifications, details & dimensions are subject to change without prior notice. Dimensions in the table are approximate subject to final confirmation by AVCON.