

# 3/2-Way Engineering Plastic Namur Solenoid Valves, For Spring Return 'K' Series Plastic Linear Actuator.

DATA SHEET  
3351K

Normally Closed, Energised To Open.

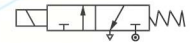
## SPECIFICATIONS

Sizes	: 6 mm (1/4").
End Connections	: Standard-G-ISO-228 (BSP-F).
Construction-Body	: Standard PA6.
-Seat	: Standard Nitrile (Buna 'N'). Optional-Viton.
Differential Pressure	: From 0 to 6 bar.
Temperature of fluid	: -10°C to 50°C.
Coil Voltage	: Standard-230-volts, 50Hz. A C. Optional - 24,110, 240 V DC & AC 50Hz or 60Hz.
Coil Insulation and Temperature.	: Ambient upto 42°C. Class 'H' insulated upto 155°C.
Coil Rating	: Continuously rated.
Enclosure	: Standard-General purpose SQ. moulded coil upto IP-20, Optional-Weatherproof SQ. moulded coil upto IP-65.
Fluids	: Air, gas.
Sales Point	: Most versatile and reliable valve for million of trouble free operations. Manual Override as standard. Easy adaptability with Avcon 'K' series actuator due to Namur interface.



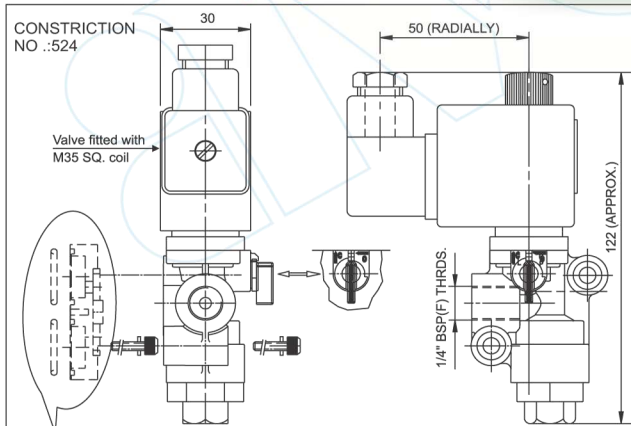
Application : For operating Piston Type Actuator with Namur Interface.  
Note : USE OF FILTER IN THE INLET SIDE IS HIGHLY RECOMMENDED.

## SPECIFICATION TABLE 3/2 WAY NORMALLY CLOSED



Catalogue Number	Pipe Size	Orifice Size	Flow Factor Kv	Minimum Pressure	Maximum Operating Pressure (bar)		BTP	Material		Constr. Ref.	VA Rating	Watt Rating	Coil Type	Housing
					AC	DC		Body	Seat					
					Air /Gas	Air /Gas								
3351K15	1/4	1.5	0.07	0	6	6	16	PA6	BN	524	12	9	M35	SQ

## DIMENSIONS IN (MM)



\* This part is required only, when Namur solenoid valve is assembled with Actuator.  
\* 2 Types are available: [1] K51/52-61-62/81/82 - 101/102/103 (Namur 24), [2] K121/122/123 (Namur 30).

## ELECTRICAL REFERENCE

Coil Type	Power Consumption & Watt Rating		Class of Insulation	Protection
	AC	DC		
M35 SQ	VA Inrush 16.6	VA Holding 12 Watts 9	H	GP/WP IP-65

While supplying interfacing plate Namur 24 or Namur 30 is included.