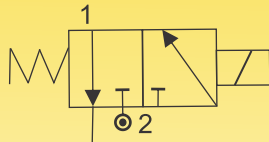


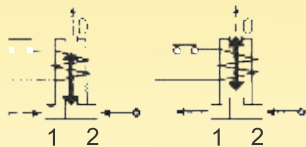
SOLENOID VALVES FOR AUTOMATION

3/2 WAY – NORMALLY CLOSED, DIRECT ACTING SOLENOID VALVE, WITHOUT MANUAL OVERRIDE

SERIES 311B



N.C.
Normally Closed
 Coil energised - Open
 Coil de-energised - Closed



NOTE: For your requirement of valves with Flameproof Enclosure, please refer to catalogue no. 9350B.

General Description:

Series 311B Solenoid Valves are Direct Acting, available in Normally Closed Type and do not require minimum pressure to operate. Valves are used in general applications where small overall dimensions and low power consumption is required. Valves are applicable on media such as Air, Nitrogen, Inert Gas, etc. provided are compatible with construction material of the valve.

End Connection:

'G'-ISO-228 (BSP) & NPT.

Max Temperature Range:

For media – Minimum (-)5°C and maximum with Buna Nitrile seating is 80°C; Viton seating 140°C. Max. ambient temperature with Class 'H' coil (+)42°C.

Mounting Bracket:

Mounting Brackets are available as accessory.

Coil:

Series 311B Solenoid Valves are supplied with Class 'H' insulated (180°C) coil; encapsulated in Thermo Plastic, containing 40% Glass fibre. All coils are for continuous service, 100% duty (E.D). Rated voltage tolerances for all AC Coils ±10%/-5% and for DC Supply Coils +10%/-5%. Coils can be used on AC with frequency of 50 Hz to IP 65 as per IEC-60529-2001.

Installation:

Valves can be mounted in any position except "Inverted", preferably in horizontal pipeline with magnetic construction in vertical and upright position.

Series 311B Solenoid valves are not designed for Back Pressure coming from downstream side.

Approvals:

IP-65 As per IEC-60529-2001, Coil M22-SQ & M36-SQ: 220/230V 50/60 Hz, 240V 50/60Hz, 110V 50/60 Hz, 24V DC.

Material:

Valve Body : Brass stamping to IS- 6912 (1/8" & 1/4"),

: ASTM A351 Gr.CF8 (SS304), Optional: ASTM A351 Gr.CF8M

Seals(Seating) : Buna Nitrile or Viton.

Tube Nut : For Brass body and for Stainless Steel body : AISI 316St.St.,

Plunger & Stopper : AISI 430FR St.St.

Spring : AISI302 St.St.

Shading Ring : For AC: Copper / Al / Silver, For DC: No shading ring.

Coil Type : AC – M22-SQ/GP/H, 240, 110 V 50 Hz, Rating:5.5 VA and DC-M22-SQ/GP/H, 24V Rating:4 Watts AC – M36-SQ/GP/H, 240, 110V 50 Hz, Rating:18 VA. DC-M36-SQ/GP/H,24 V Rating: 12 Watts.

Application : For Operating Diaphragm Control Valve, Pneumatic Cylinders, Piston Type Valves, etc.

NOTE : Manual override not available.

SPECIFICATIONS:

Series	Size 'G'thr	Orifice Size	Flow Factor Kv	Body Material	Seat	BTP	Working Pr.(bar)				Coil Type	Coil Rating		Constr. Ref. No	Weight *
							230V AC		24V DC			VA	Watt		
			M ³ /hr.			bar	min	max	min	max	~	=		kg	
311B	Inch	mm													
1503	1/8"	1.5	0.06	BR -	BN V	16	0	15	0	15	M22-SQ	5.5	4	582	0.136
2203	1/8"	2.2	0.12	BR -	BN V	16	0	7	0	7	M22-SQ	5.5	4	582	0.136
1506	1/4"	1.5	0.06	BR CF8	BN V	16	0	15	0	15	M36-SQ	18	12	604	0.285
2206	1/4"	2.2	0.12	BR CF8	BN V	16	0	7.5	0	7.5	M36-SQ	18	12	604	0.285
3506	1/4"	3.5	0.15	BR CF8	BN V	16	0	3.5	0	3.5	M36-SQ	18	12	604	0.285

*Weight of Brass Body.

NOTE: Valves suitable for AC and DC supply are different in characteristics and construction. No Interchanging of coils between DC to AC or AC to DC possible. DO NOT INTERCHANGE COILS. Minimum details required for submitting offer: Size, Body material, Seat material, medium name, Flow (M3/hr), pressure (bar), temp. Deg.C, coil voltage AC or DC.,Quantity (Nos), etc.

