

2/2-Way Engineering Plastic Body, Pilot Operated Diaphragm Type, Solenoid Valves.

DATA SHEET
3100F

Normally Closed, Energised To Open.

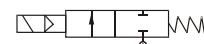
SPECIFICATIONS

Sizes	: 15mm (1/2") to 50mm (2").
End Connection	: Standard-G-ISO-228 (BSP-F), Optional - RP (150 7/1) BSP-T.
Construction -Body	: 15mm (1/2") to 50mm(2") Glass Filled Nylon (PA-6).
Diaphragm Seat	: Standard-Hytrel.
Differential Pressure	: 0.5 to 6 bar Maximum.
Temperature of Fluid	: -5° to 65°C.
Coil Voltage	: Standard -230-volts. 50Hz. AC. Optional -24, 50Hz AC. 12, 24VDC.
Coil Insulation and Temperature	: Ambient upto 32°C. Class 'F' Insulated upto 130°C.
Coil Rating	: Continuously rated.
Enclosure	: Standard-General Purpose SQ. moulded coil upto IP-20. Optional-Weatherproof SQ. moulded coil upto IP-67.
Fluids	: Air, water, gas-Non injurious to Body Material.



Standard Features	: Manual override.
Optional Features	: Flow Restrictor, Pulse to open, Pulse to close Coil.
Sales Points	: Most reliable, Maintenance free, on-off valve in our range for Irrigation valves.
Application	: Water supply, Water sprayer. Water Sprinklers, Air Dryer, Supply of Air at factory level (Max WP 6 Bar).
Caution	: NOT TO BE USED ON OIL, STEAM, FUEL GAS, HOT-WATER, WATER BELOW -15°C, VIBRATING MACHINERY. USE OF 160 MICRONS / 100 MESH-STRAINER (FILTER) IS HIGHLY RECOMMENDED NORMALLY OPEN DESIGN IS NOT AVAILABLE.

SPECIFICATION TABLE 2/2 WAY NORMALLY CLOSED



Catalogue Number	Pipe Size	Orifice Size	Flow Factor Kv	Minimum Pressure	Maximum Operating Pressure (bar)				BTP	Material		Constr. Ref.	VA Rating	Watt Rating	Coil	Housing
					AC		DC			Body	Seat					
					Air/Gas	Water	Air/Gas	Water								
3100F15	1/2	15	4	0.5	6	6	6	6	10	PA6	HY	530	9.4	6	M22	SQ
3100F20	3/4	20	5.2	0.5	6	6	6	6	10	PA6	HY	530	9.4	6	M22	SQ
3100F25	1	25	8.6	0.5	6	6	6	6	10	PA6	HY	530	9.4	6	M22	SQ
3100F35	1 1/2	35	17.3	0.5	6	6	6	6	10	PA6	HY	530	9.4	6	M22	SQ
3100F50	2	50	30.5	0.5	6	6	6	6	10	PA6	HY	530	9.4	6	M22	SQ

◆ BTP Body test pressure 10 bar.