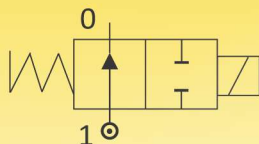


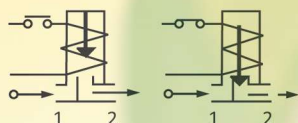
# SOLENOID VALVES FOR STEAM DUTY.

2/2 WAY – NORMALLY OPEN – DIRECT ACTING, WITHOUT MANUAL OVERRIDE

## SERIES 172B



**N.O.**  
**Normally Open**  
Coil energised - Closed  
Coil de-energised - Open



### General Description:

Series 172B Solenoid Valves are Direct Acting and require no minimum differential pressure to operate. Valves are used on low volume steam or hot water flow. Valves are suitable for general application with medium such as Normal temperature Water, Hot Water, Low pressure Steam. Every media should be free from contamination and sediments.

### End Connection:

'G'-ISO-228 (BSP) & NPT.

### Max Temperature Range:

For media- Min.(-)5°C & Max. with :  
EPDM Diaphragm: 130°C. with Viton 155  
Deg.C.Max. ambient temperature with  
Class 'H' coil(+)42°C.

### Coil:

Series 172B Solenoid Valves are available in Class 'H' insulated (180°C) coils; encapsulated in Thermo Plastic, containing 40% Glass fibre. All coils are for continuous service, 100% duty (E.D). Rated voltage tolerances for all AC Coils ±10%/-5% and for DC Supply Coils +10%/-5%. Coils are suitable for Connectors Form A (ISO4400) according to EN 175301-803 and protection class IP 65 as per IEC-60529-2001.

### Installation:

Valves can be mounted in any position except "Inverted", preferably in horizontal pipeline with magnetic construction in vertical and upright position.

Series 172B Solenoid valves are not designed for Back Pressure coming from downstream side.

### Approvals:

IP-65 As per IEC-60529-2001. Coil M36-SQ: 220/230V 50/60 Hz, 240V 50/60Hz, 110V 50/60 Hz & 24V DC.

### Material:

|                   |   |
|-------------------|---|
| Valve Body        | : Brass Stamping to IS 6912 (¼"),   |
|                   | : Optional : ASTM A351 Gr.CF8 (SS304).  |
| Seals(Seating)    | : EPDM/Viton  |
| Tube Nut          | : AISI 316St.St.  |
| Plunger & Stopper | : AISI 430FR St.St.   |
| Spring            | : AISI302 St.St.  |
| Shading Ring      | : For AC:Copper/Al/Silver<br>For DC:No Shading Ring.  |
| Coil Type         | : AC-M36-SQ/GP/HT, 240V, 110V 50Hz, Rating: 18VA.<br>DC-M36-SQ/GP/HT, 24V DC, Rating: 12 Watts. |

### NOTE

: Manual override not available.

## SPECIFICATIONS:

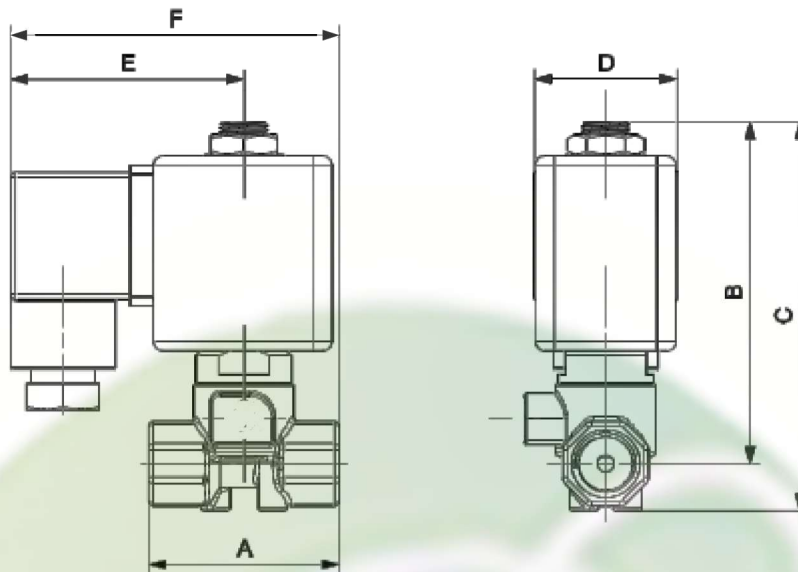
| Series | Size 'G' thr | Orifice Size | Flow Factor Kv | Body Material |     | Seat   | BTP | Working Pr.(bar) |     | Coil Type (HT) | Coil Rating |      | Constr. Ref. No | Weight* (kgs) |
|--------|--------------|--------------|----------------|---------------|-----|--------|-----|------------------|-----|----------------|-------------|------|-----------------|---------------|
|        |              |              |                |               |     |        |     |                  |     |                | VA          | Watt |                 |               |
| 172B   | Inch         | mm           | M³/hr.         | BR            | CF8 | EPDM/V | 16  | min              | max | M36-SQ         | 18          | 12   | 594             | 0.290         |
| 06     | ¼            | 3            | 0.12           |               |     |        |     | 0                | 4   |                |             |      |                 |               |

\*Weight of CF8 Body.



**NOTE:** Valves suitable for AC and DC supply are different in characteristics and construction. No Interchanging of coils between DC to AC or AC to DC possible. DO NOT INTERCHANGE COILS.  
Minimum details required for submitting offer: Size , Body material, seating, medium name, Flow (M3/hr), pressure (bar), temp. Deg.C, coil voltage AC or DC.,Quantity (Nos), etc.

Construction Ref. No.594



### DIMENSION TABLE

| CATALOGUE NO. | Size | DIMENSION IN MM |    |    |    |    |    | APPROX WT.<br>(kgs) |
|---------------|------|-----------------|----|----|----|----|----|---------------------|
|               |      | A               | B  | C  | D  | D1 | D2 |                     |
| 172B 06       | 1/4  | 40              | 79 | 89 | 30 | 49 | 69 | 0.290               |

### How to read the catalogue:

172B   06   BR/CF8   EPDM   BSP/NPT

- Series 2-way Normally Closed, Internal Pilot Operated.
- Size of valve/ Port size.
- Body material (Brass / CF8)
- Seating material (EPDM)
- End Connection (BSP / NPT)

### Coil Voltage:

M36   SQ   H-18/12   WP-65

- Size of Coil.
- Coil Type (Square)
- Class of Insulation. Coil VA (AC) or Watts (DC)
- Class of Electrical Protection.

110V   50Hz   AC/DC

- Electrical Voltage, Std. 230, 110, 24 AC / 24 V DC
- Hertz
- Characteristics (AC / DC)