

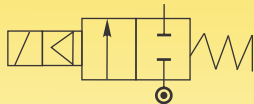


SOLENOID VALVES FOR BAG FILTER APPLICATION

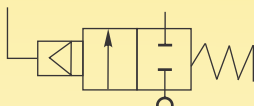


SERIES 150B - 2/2 WAY – NORMALLY CLOSED INTERNAL PILOT OPERATED & SERIES 150A - 2/2 WAY – NORMALLY CLOSED EXTERNAL PILOT OPERATED VALVES.

SERIES 150B-A



¾", 1" & 1½" Valve (B)



¾", 1" & 1½" Valve (A)

NOTE: For your requirement of valves with Flameproof Enclosure, please refer to catalogue no. 9150A/9150B.

General Description:

Series 150B Solenoid Valves are Internal Pilot Operated, Diaphragm type, Bag Filter Solenoid Valves and Series 150A are External Pilot Operated, Diaphragm type, Bag Filter Valves - requires very low differential pressure as well as low power coil to operate. They are used in Bag House as "Bag Shaker" Valves.

End Connection:

'G' - ISO-228 (BSP).

Max. Temperature Range:

For media Air or Neutral Gas - Minimum (-)5°C and maximum with Hytrel diaphragm:120°C, Buna Nitrile diaphragm: 80°C, and Viton diaphragm 140°C. Max. ambient temperature with Class 'H' coil (+)42°C.

Coils:

Series 150B Solenoid Valves are supplied with Class 'H' insulated coils, encapsulated in Thermo Plastic, containing 40% Glass fibre. All coils are for continuous service, 100% duty (E.D). Rated voltage tolerances for all AC Coils ±10%/-5% and for DC Supply Coils +10%/-5%. Coils can be used on AC with frequency of 50 Hz.

Installation:

Valves can be mounted in any position except "Inverted", preferable in Horizontal pipeline with magnetic construction in vertical and upright position.

Series 150B Solenoid valve are not designed for Back Pressure coming from downstream side.

Approvals:

IP-65 As per IEC-60529-2001,
Coil-M22-SQ : 220/230V, 50/60Hz,
240V 50/60Hz, 110V 50/60Hz, 24V DC.

Material:

Valve Body : Standard : Aluminum LM-24 Die cast,
Optional : ASTM A351 Gr.CF8M(20mm&25mm)
Diaphragm Mtl. : Hytrel, Buna Nitrile and Viton.
Tube Nut : Brass extruded tube/ 316
Plunger & Stopper : AISI 430FR St.St.
Spring : AISI302 St.St.
Shading Ring : For AC:Copper/Al/Silver,
For DC:No Shading Ring.
Coil Type : AC-M22-SQ/GP/H,
240V, 110V 50Hz,
Rating:9.4VA,
DC-M22-SQ/GP/H,
24 VDC, Rating:6 Watt.

SPECIFICATIONS: Normally Closed Internal Pilot Operated

Series	Pipe Size	Orifice Size	Flow Factor Kv	Body Material		Seat			BTP	Working Pr.(bar)		Coil Type	Coil Rating		Constr. Ref.	Weight* Kgs
										min	max		VA	Watt		
150B	Inch	mm	M ³ /hr.	AD	CF8M	HYT	BN	V	bar	min	max	M22-SQ	~	=	578	0.5
20	¾	29	11	AD	CF8M	HYT	BN	V	16	0.3	8.5	M22-SQ	9.4	6	578	0.5
25	1	29	17	AD	CF8M	HYT	BN	V	16	0.3	8.5	M22-SQ	9.4	6	578	0.5
35	1½	52	43	AD	-	HYT	BN	V	16	0.3	8.5	M22-SQ	9.4	6	578	1.1

SPECIFICATIONS: Normally Closed External Pilot Operated

Series	Pipe Size	Orifice Size	Flow Factor Kv	Body Material		Seat			BTP	Working Pr.(bar)		Coil Type	Coil Rating		Constr. Ref.	Weight* Kgs
										min	max		VA	Watt		
150A	Inch	mm	M ³ /hr.	AD	CF8M	HYT	BN	V	bar	min	max	-	-	-	578.1	0.4
20	¾	29	11	AD	CF8M	HYT	BN	V	16	0.3	8.5	-	-	-	578.1	0.4
25	1	29	17	AD	CF8M	HYT	BN	V	16	0.3	8.5	-	-	-	578.1	0.4
35	1½	52	43	AD	-	HYT	BN	V	16	0.3	8.5	-	-	-	578.1	1.05

* Weight of AD Body

NOTE: Valves suitable for AC and DC supply are different in characteristics and construction. No Interchanging of coils between DC to AC or AC to DC possible. DO NOT INTERCHANGE COILS.

Minimum details required for submitting offer: Size, Body material, diaphragm, medium name, Flow (M3/hr), pressure (bar), temp. Deg.C, coil voltage AC or DC.,Quantity (Nos), etc.

