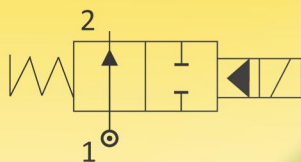


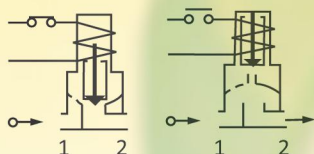
SOLENOID VALVES FOR AUTOMATION

2/2 WAY – NORMALLY OPEN – SEMI LIFT TYPE, WITHOUT MANUAL OVERRIDE

SERIES 125B



N.O.
Normally Open
Coil energised - Closed
Coil de-energised - Open



General Description:

Series 125B Solenoid Valves are Semi-Lift Valves and do not need minimum pressure differential for closing; however for opening and getting flow 30mbar pressure is required.

Valves are Normally Open, suitable for general application with media such as Air, Water, Inert Gas, Light Oil (2°E), provided fluids are compatible with construction material of the valve.

Max. Temperature Range:

Working temperature for media is (-)5°C & Max. with Buna Nitrile Diaphragm: 80 °C and with Viton diaphragm upto 120 °C. Max. ambient temperature with Class 'H' coil (+)42°C.

Application:

Series 125B Solenoid Valves are ideally suitable for automatic control of media for wide range, requires very low differential pressure. These valves can be supplied with Viton parts, suitable for vacuum application upto 10³ Torr. Valves can be used on gas with pressure rating above 200mbar.

Coils:

Series 125B Solenoid Valves are available in Class 'H' insulated (180°C) Coils. Moulded in Thermo Plastic, containing 40% Glass fibre. All coils are for continuous service, 100% duty (E.D). Rated voltage tolerances for all AC Coils ±10%/-5% and for DC Supply Coils +10%/-5%. Coils are suitable for Connectors Form A (ISO4400) according to EN 175301-803 and Protection Class IP 65 as per IEC-60529-2001.

Installation:

The valves are essentially suitable for mounting in Horizontal pipeline with magnetic construction in vertical and upright position.

Series 125B Solenoid Valves are not designed for Back Pressure coming from downstream side.

Approvals:

IP-65 As per IEC-60529-2001, Coil M-36-SQ: 220/230V 50/60 Hz, 240 50/60Hz, 110 50/60 Hz & 24V DC.

Material:

Valve body	: Brass stamping to IS 6912 (3/8" & 1/2"),
	: ASTM A351 Gr.CF8 (SS304), Optional: ASTM A351 Gr.CF8M (SS316).
Seals (seating)	: Buna Nitrile or Viton,
Tube Nut	: AISI 316 St.St.,
Plunger and stopper	: AISI 430FR St.St.,
Spring	: AISI302 St.St.,
Shading ring	: For AC: Copper/Al/ Silver, For DC: No shading ring.
Coil Type	: AC – M36-SQ/GP/H, 240, 110V 50Hz. Rating:18 VA, & M40 SQ/GP/H, Rating: 30 VA DC – M36-SQ/GP/H, 24V DC, Rating: 12 Watts & M40 SQ/GP, Rating: 16 Watts.

NOTE

: Manual override not available

SPECIFICATIONS:

Series	Pipe Size	Orifice	Kv	Body Material		Seat		BTP	Working Pr.(bar)			Coil Type	Coil Rating		Constr. Ref.	Weight
													VA	Watt		
125B	Inch	mm	M ³ /hr.	BR	CF8	BN	V	bar	min	max		M36-SQ	18	12	592	kgs
10*	3/8	15	2.6	BR	CF8	BN	V	16	0	6.0		M36-SQ	18	12	592	0.575
15*	1/2	15	2.6	BR	CF8	BN	V	16	0	6.0		M36-SQ	18	12	592	0.535
20*	3/4	20	5.2	-	CF8	BN	V	16	0	6.0		M36-SQ	18	12	592	0.845
25	1	25	8.6	-	CF8	BN	V	16	0	6.0		M36-SQ	18	12	592	0.945
35**	1 1/2	35	30	-	CF8	BN	V	16	0	6.0		M40-SQ	30	16	592	1.705
50**	2	50	37.5	-	CF8	BN	V	16	0	6.0		M40-SQ	30	16	592	2.905



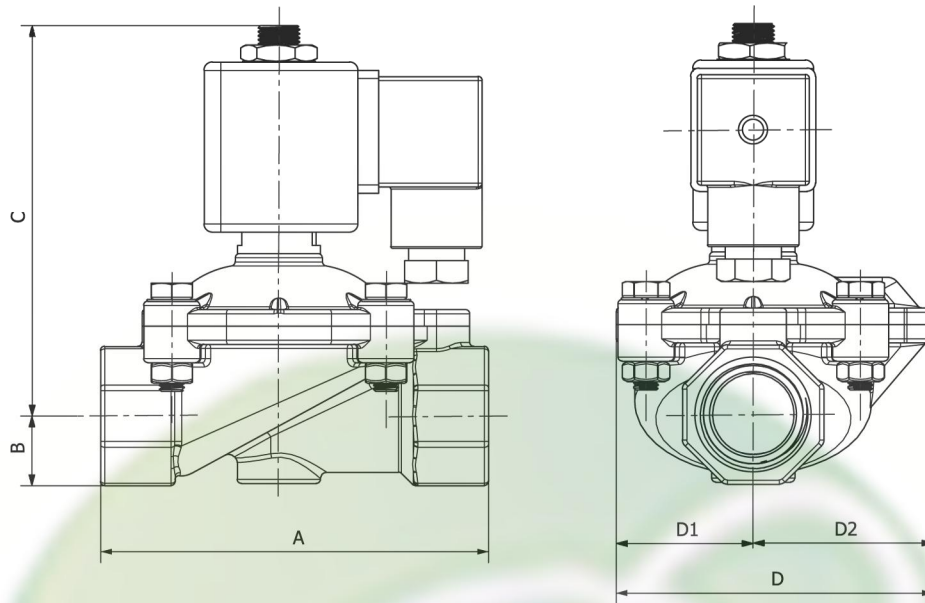
NOTE: 1) Presently only upto 25 MM size available. **Not available

2) Valves suitable for AC and DC supply are different in characteristics and construction.

No Interchanging of coils between DC to AC or AC to DC possible. DO NOT INTERCHANGE COILS.

Minimum details required for submitting offer: Size, Body material, seating, medium name, Flow (M3/hr) pressure (bar), temp. Deg.C, coil voltage AC or DC., Quantity (Nos), etc.

Construction Ref. No. 592



DIMENSION TABLE

CATALOGUE NO.	Size	A	B	C	D	D1	D2	APPROX WT.(kgs)
125B 10	½"(FG)	67	13	95	53	22	31	0.575
125B 15	½"(IC)	67	13	95	53	22	31	0.535
125B 20	¾"(IC)	94	17	101	76	33	43	0.845
125B 25	1"(IC)	102	20	104	98	33	43	0.945
125B 35	1½"(IC)	132	28	111	110	55	55	1.705
125B 50	2"(IC)	160	35	119	132	64	68	2.905

How to read the catalogue:

125B 15 BR/CF8 BN/V BSP/NPT

- ➔ Series 2-way Normally Closed, Semi Leit Type
- ➔ Size of valve/ Port size.
- ➔ Body material (Brass / CF8)
- ➔ Seating material (Buna Nitrile/Viton)
- ➔ End Connection (BSP / NPT)

Coil Voltage:

M36/40 SQ H-18-30/12-16 WP-65

- ➔ Size of Coil.
- ➔ Coil Type (Square)
- ➔ Class of Insulation. Coil VA (AC) or Watts (DC)
- ➔ Class of Electrical Protection.

110V 50Hz AC/DC

- ➔ Electrical Voltage, Std. 230, 110, 24 AC / 24 V DC
- ➔ Hertz
- ➔ Characteristics (AC / DC)